

Summer 1 2023

Year 3

Maths



Fractions

Money

Time



PSHE



Relationships

Thorpepark 50

Visit a nature reserve

Bempton Cliffs



Coasts

Do all coasts have a beach?

In English we will be reading...

The Elephant's friend by Marcia Williams
The boy who grew dragons by Andy Sheperd
Kenning poem

We will be writing:

Music

In Music we will be learning 'Bringing us together'



Computing

In Computing we will be programming with Purple Mash.



Art

This half term we will be looking at Andrea Hunter and we will create felted seascapes.

Religion, Belief and Values

Sacred places

What is sacred?



Science– Animals including humans

Babies are born with about 300 bones, almost a third of which eventually fuse together to form the 206-bone skeleton of an adult.

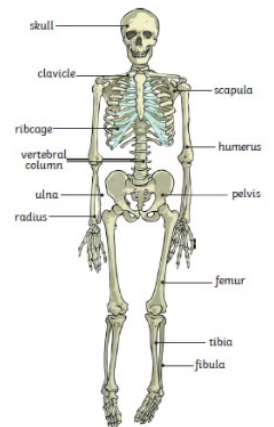
Vertebrates are animals that have a backbone. These skeletons are called endoskeletons - this means that the skeletons are on the inside of the bodies. These skeletons grow with the bodies.

When the skeleton exists outside the body, it is called an exoskeleton. An exoskeleton is a covering that supports and protects animals. These have to be shed and a new skeleton is grown.

The three most important things a skeleton does are to provide support and shape to an animal's body, allow movement through the joints and protect organs.

Joints allow the body to make movements. The body has many bones and are connected through the joints.

Muscles are attached to the bone by tendons and help them to move. When a muscle contracts it gets shorter and pulls on the bone it is attached to.



Geography

In Geography we will be learning how...

- coastal towns on the Holderness coast include Hornsea, Withernsea, Flamborough and Bridlington.
- the wind, sea and changes in temperature cause coastal erosion.
- erosion can change the characteristics of the coast creating features such as arches, stacks, stumps and caves.
- to include human and physical features on my own map.
- sea walls, groynes, boulder barriers are used to prevent and slow coastal erosion.